

# Boarding School Integration, Sibford School

## Course Information



### Programme duration

1 Week – 1 Term

### Hours of tuition

10 hours of EFL tuition per week

### Minimum level

Intermediate (B1)

### Maximum level

Advanced (C1)

### Minimum age

11

### Maximum age

17

### Accommodation

Residential (boarding house)  
with shared bathrooms

### Availability

Available to individuals and groups  
during the following term dates:

#### 2022/23

##### Autumn Term 2022

Tuesday 6 September –  
Friday 9 December

*Half term:*

Monday 17 October –  
Friday 28 October

##### Spring Term 2023

Tuesday 3 January –  
Friday 24 March

*Half term:*

Monday 13 February –  
Friday 17 February

##### Summer Term 2023

Monday 17 April –  
Friday 7 July

*Half term:*

Monday 29 May –  
Friday 2 June



### Course Overview

Our boarding school integration programme at Sibford School offers students the opportunity to fully immerse themselves in UK boarding school life and culture, and mix with both British and international students. Students taking part in this integration programme can expect to experience a variety of classes across each week in addition to taking part in the schools' vibrant social programme.

### Who is this course suitable for?

The boarding school integration programme is particularly suitable for students who already have a grasp of English and are looking to improve their fluency and confidence in an authentic UK school environment.



### Sample Timetable

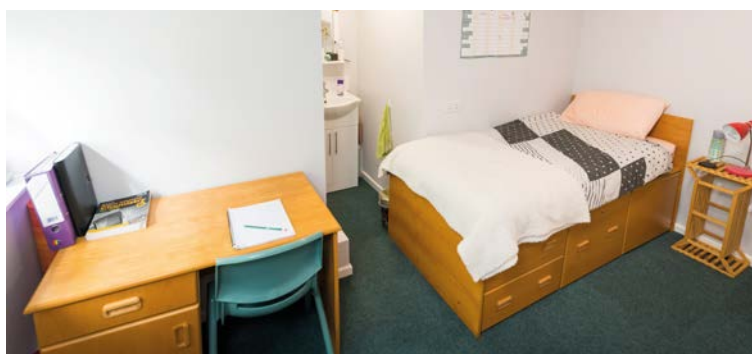
	Mon	Tue	Wed	Thu	Fri
08:40-09:05	Tutor Time	Tutor Time	Tutor Time	Tutor Time	PSHE
09:10-09:40	English	Music	PE	History	Food Nutrition
09:40-10:15					
10:35-11:05	Religious Studies	Science	Maths	Art	Design
11:05-11:40					
11:45-12:15	Maths	English	Outdoor Learning	English	PE
12:15-12:50					
13:50-13:55	Tutor Time	Tutor Time	Tutor Time	Tutor Time	Tutor Time
13:55-14:30	Science	Games	English	Geography	English
14:30-15:05					
15:10-15:40	English	Games	Science	Maths	PSHE
15:40-16:15					

# Boarding School Integration, Sibford School

Accommodation Options



OXFORD SPIRES  
INTERNATIONAL



## Boarding School Accommodation

- ➔ Twin and larger rooms available
- ➔ Shared facilities
- ➔ Sociable common rooms
- ➔ Laundry facilities available
- ➔ Bed linens provided and changed weekly (towels not provided)
- ➔ Full board

## What is included in the programme fees?

- Full-time integration at Sibford School
- Full board residential accommodation
- Dedicated Oxford Spires staff member from booking to departure, and 24/7 support
- Airport transfers

## What is not included in the programme fees?

- Flights, travel insurance, and pocket money are not included in the course fees

## Price

See fees and dates

Accredited by the  
**BRITISH COUNCIL**  
for the teaching  
of English in the UK



**ALTO** Association of  
Language Travel  
Organisations

For enquiries, reservations, group quotes, and to book, please contact us on: [info@oxfordspires.education](mailto:info@oxfordspires.education) or call **+44 (0) 1865 800 290**